



---

# TROPOS Web Client 1.2.0

Release Notes  
Issue 2.0

Date 31st October 2007

Document Reference: Release Notes 120.doc

---

SSI Chelford House Hampshire International Business Park Crockford Lane  
BASINGSTOKE Hampshire RG24 8WH ENGLAND

[www.ssi-world.com](http://www.ssi-world.com)

**Copyright notice**

Copyright©, 2007 by STRATEGIC SYSTEMS INTERNATIONAL LIMITED

All rights reserved. This document is supplied on the strict understanding that it is not to be copied or supplied in part or in whole to third parties without the prior written consent of:

SSI  
Chelford House  
Hampshire International Business Park  
Crockford Lane  
Basingstoke  
Hampshire RG24 8WH  
Tel: (01256) 685200  
Fax: (01256) 685201

**Disclaimer**

Even though this document has been prepared with great care based on our understanding of the information provided, minor errors, omissions and deviations from the actual software and systems solution cannot always be avoided. The user therefore cannot derive any rights from the description and responses that follow. This document remains the property of SSI.



---

## Contents

<b>1</b>	<b>INTRODUCTION</b>	<b>4</b>
1.1	Purpose	4
1.2	TROPOS Web Client 1.2.0 Overview	4
<b>2</b>	<b>NEW FEATURES AT THIS RELEASE</b>	<b>7</b>
2.1	Implementation of Microsoft .NET	7
2.2	Windows Authentication	7
2.3	TROPOS Server-related Functionality	8
2.4	Look-Aside Lists	9
2.5	Data Access	12
2.6	User Management	13
2.7	Role Management	15
2.8	Menu Management	18
2.9	Search Facilities	25
2.10	Utilities	28
2.11	Help Facilities	31
2.12	Additions to the System Frame	32
<b>3</b>	<b>WEB CLIENT CORRECTIONS AT THE 1.2.0 RELEASE</b>	<b>33</b>
3.1	User Management	33
3.2	Role Management	34
3.3	Menu Management	34
3.4	Cosmetic Changes	35
3.5	Modified Utilities	35
3.6	TROPOS Server-related Modifications	36
3.7	Database Modifications	39
3.8	Technical Changes	40

# 1 Introduction

## 1.1 Purpose

This document describes the new features and functionality that is available with TROPOS Web Client 1.2.0. It contains the differences between TROPOS Web Client releases 1.1.0 and 1.2.0. Some changes have been made available on interim releases of TROPOS Web Client 1.1.0.

## 1.2 TROPOS Web Client 1.2.0 Overview

### 1.2.1 Summary

The key benefits to be obtained by upgrading to TROPOS Web Client 1.2.0 are:

- Increased scalability, compared to TROPOS Web Client 1.1.0, particularly when connecting to TROPOS Server 3.0.1 and later. Each TROPOS Web Client instance can now handle 125 concurrent users, compared to the 40 users per instance at release 1.1.0.
- Increased stability reducing the need to restart Internet Information Services.
- Removal of the reliance on the Microsoft Java Virtual Machine (MSJVM), which will be out of support at the end of 2007. See 1.2.2 for further details of this change.
- Reduced memory use on the client PC.

The major changes included in TROPOS Web Client 1.2.0 are:

- Implementation of Microsoft .NET:
  - TROPOS Web Client 1.2.0 includes significant infrastructure changes to implement Microsoft ASP.NET 2.0; technical changes were made, by an automated conversion process, to virtually every page to implement this new technology, This enables the Web Client to operate in the absence of the Java Virtual Machine on the client machine, and provides enhanced stability and scalability.
  - Detailed reporting of errors has been restricted to enhance security.
- TROPOS Server-related enhancements including:
  - Electronic signatures on complex transactions.
  - Sorting of DAVL (data value) lists.
- Windows Authentication, which allows a user to securely log in to TROPOS Web Client without entry of a username and password. In conjunction with TROPOS Application Server 3.1.0, this is extended to the TROPOS Application. **Section 2.2.2 contains important information concerning the creation of a security group within Active Directory which must be completed before TROPOS Web Client will operate using Windows Authentication.**
- Data access enhancements including support for SQL Server 2005 and SQL Server Native Client.
- Enhanced management of users, roles and menus.
- Enhanced search facilities.
- Other enhancements detailed in section 2, and corrections detailed in section 3.

## 1.2.2 Microsoft Java Virtual Machine (MSJVM) Removal

The dependency on MSJVM has been removed at this release of the Web Client. This release does not require any Java Virtual Machine to be installed on the client machine. The removal of MSJVM reduces the memory requirements on the client machine by around 6% and removes the dependency on software which is no longer distributed and which will be out of support by the end of 2007.

If the customer has customised any existing TROPOS Web Client screen or has created a Role-based Application using Application Designer version 2.2 or earlier (or using the Java Application template in Application Designer 2.3), then the customised pages will need to be amended to use the new scripting mechanism.

Application Designer 2.4 contains a tool that replaces the old MSJVM code with new code that uses web service technology to drive TROPOS transactions. Although this is an automated process, it is vital that all applications and customised screens be retested before MSJVM is removed from all client machines.

TROPOS Web Client 1.2.0 allows both MSJVM code and the new code to be run in parallel. Users should note that the MSJVM code will run on a separate connection to the TROPOS database. The parallel connections are made automatically by logging in a separate user session with the same details as the original user. This can give rise to a number of considerations:

- This mechanism does not support Windows Authentication.
- The number of allowed users on the system may need to be increased during the period when applications are being converted.
- It is not possible to limit a user to a single session via the concurrent login flag on the AIAD transaction because two sessions are required, one for the new standard TROPOS transactions and one for the unconverted transaction or role-based application.
- Saved keys will not be shared between the sessions, so users may experience differences in the way in which the system operates since saved keys will not default between converted and unconverted screens.
- The ability to connect parallel sessions may be disabled using a setting in the TROPOS Web Console. This will prevent unconverted pages being used in the Web Client.

SSI recommends that all applications should be converted to remove the MSJVM script prior to TROPOS Web Client 1.2.0 being made live. Note that applications created using the “TROPOS Web Application” template in Application Designer 2.3 are already compatible with the new mechanism and may be deployed to Web Client 1.2.0 without conversion; however Application Designer 2.4 will make changes to enable such applications to continue to be used stand-alone and to add new paging functionality into embedded LALs.

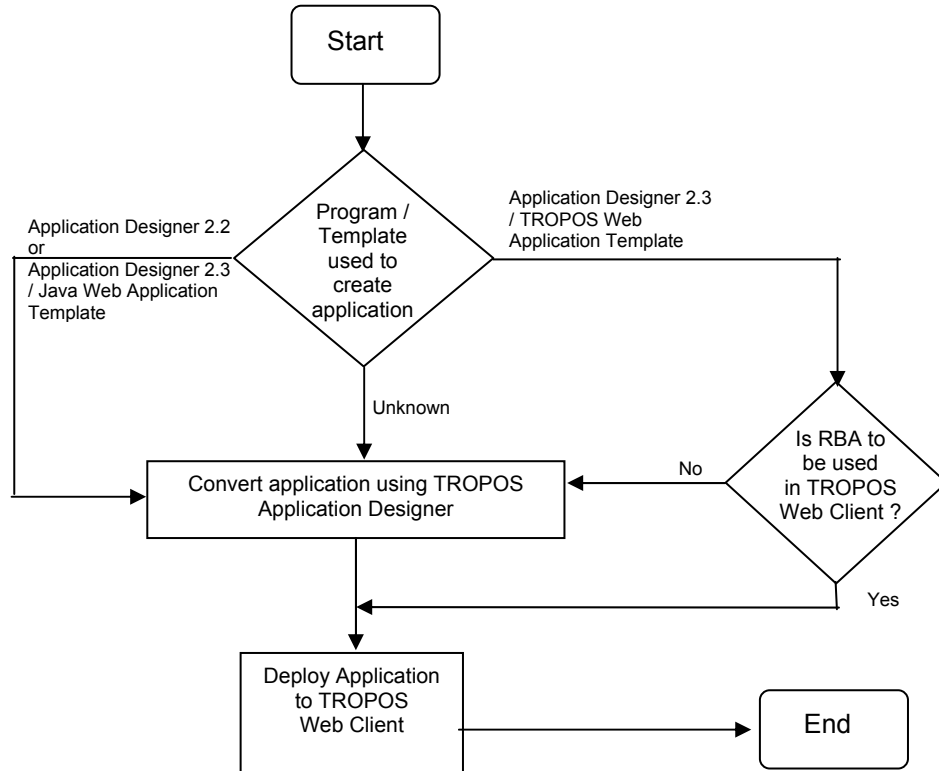


Figure 1 - Deciding whether a web application needs conversion

## **2 New Features at This Release**

### **2.1 Implementation of Microsoft .NET**

#### **2.1.1 Removal of Dependency on Java Virtual Machine**

Changes have been made to the Web Client software (including implementation of two web services) to remove the dependency on the Microsoft Java Virtual Machine. A revised list of dependencies is included in the "Upgrading the TROPOS Web Client" manual on the CD.

As a result of this change, the number of users that can connect to a single instance of the TROPOS Web Client has increased; for optimum performance, it is recommended that no more than 125 concurrent TROPOS users connect to a TROPOS Web Client (increased to 200 where only light use is expected by the majority of users).

#### **2.1.2 Restriction of Detailed Error Reporting**

Some error messages from TROPOS Web Client may give useful information to a malicious user of the application (in particular detailed errors from the ASP.NET runtime which reveal application code, and SQL errors which may reveal details of the database schema).

By default, TROPOS Web Client will only report detailed errors on the console of the web server (or via remote desktop). Web Client users on other PCs (including terminal servers) will only see a generic message indicating that an error has occurred.

A detailed error report may be obtained by repeating the failing operation on the web server, or from the logs (if logging is enabled).

The setting is configurable.

### **2.2 Windows Authentication**

#### **2.2.1 Summary**

The software has been changed to implement Windows Authentication. This allows the user's Windows credentials to be used to provide secure logon to the TROPOS Web Client and to TROPOS Application Server 3.1.0, without the user needing to enter an identity (username) or password.

Each Windows user may be mapped to a TROPOS user providing fully automatic login for those users who only need to access a single TROPOS database. The functionality is customisable to provide individual users with the ability to select TROPOS database and identity where required.

Electronic signature processing will continue to require entry of the TROPOS identity and password.

## 2.2.2 Required Security Changes

All users of the TROPOS Web Client must be members of a single Windows Active Directory security group, for which the recommended name is **Tropos Web Client Users**, in addition to any other group memberships they may have. This group must be created, and users assigned to it, before the TROPOS Web Client will operate in Windows Authentication mode.

If this requirement cannot be met (for example because Active Directory is not installed), then the TROPOS Web Client can be run without Windows Authentication enabled.

## 2.2.3 Global Administrator Options

Windows authentication parameters have been added to the administrator "Global Options" screen. These allow the administrator to control whether or not Windows authentication is to be implemented on the Web Client and/or on the TROPOS application server. The administrator may also define default values for domain, TROPOS application server and TROPOS database.

If the TROPOS application server is at release 3.0.1 or earlier, then it is recommended that the global options are set such that the TROPOS dialog must be used to login to the TROPOS application server; this setting is described in the help for the global administrator options page.

## 2.2.4 Other Enhancements

Enhancements have been made to other Web Client screens to control Windows authentication, along with some new utilities. These are documented under sections 2.6 User Management and 2.10 Utilities (below).

## 2.3 TROPOS Server-related Functionality

### 2.3.1 Electronic Signatures on Complex Transactions

The software has been changed to implement electronic signature processing for RBAs that contain complex transactions and have been integrated into the Web Client.

### 2.3.2 Sorting of DAVL (Data Value) Lists

DAVL lists associated with fields on TROPOS screens were sorted by code (which is not displayed to the user); this could sometimes give a confusing ordering to the displayed descriptions. The software has been amended to sort such lists of DAVL values into alphabetical order by description for a more consistent appearance.

### 2.3.3 Scrolling Limit Warning

TROPOS Web Client 1.1.0.4.7 ended the scrolling display without warning when it reached the defined scrolling limit. The software has been modified such that the message "Scrolling limit reached" is appended to the scrolling region.

### 2.3.4 TROPOS Screens - Initial Display

The initial displaying of a standard TROPOS screen has been reduced to about 75% of the time it used to take. Note that this is simply the time taken to paint the HTML screen in Internet Explorer prior to any data being retrieved from the TROPOS server database.

### 2.3.5 TROPOS Connection Window

The window that pops up to establish a connection to the TROPOS server database has been simplified and rationalised as follows:

- The title of the window has changed from "TROPOS Logon" to "TROPOS Connection".
- The term "User" has been replaced by the TROPOS-specific term "Identity".
- The "Connect as Manager" label has become simply "Manager".
- The button legend "OK" has become "Connect".
- The labels and fields have been exactly aligned.

### 2.3.6 Watermark Images

TROPOS screens may optionally be watermarked with the name of the database ("handdb", "livedb" and "satdb"). This feature has been enhanced to include "livesatdb" and "handsatdb".

### 2.3.7 ASP Standalone Look-Aside Lists

ASP LALs that are run directly from the Web Client menu are launched from a special HTML page called *query.htm*. The appearance of this page has been enhanced as follows:

- The first field, which used to have no label, now has a label of "Look-aside List Identifier".
- The second field, which also used to have no label, now has a label of "Reference".
- The two input fields have been greyed out and made read-only, since their contents are set automatically and can not be changed.
- The labels and fields have been moved up and to the left so that they occupy positions matching similar fields on standard TROPOS screens.

## 2.4 Look-Aside Lists

### 2.4.1 Look-Aside List (LAL) – Additional Screens / Transactions

The 'Transaction LALs.csv' file has been extended to include LAL's for the following transactions and screens.

Trans	Screen	Description
ALCM	2582	Maintain Alcohol Details
ALCQ	2583	Alcohol Details Enquiry
ESAU	1046	Authorise Stock Disposal
ESCA	1046	Cancel Stock Disposal

---

ESDP	927	Expired Stock Disposal
EXOM	2465	Monthly Omnibus Report
EXRD	2266	Daily Excise Returns
EXRG	2691	Generate Excise Returns
EXRM	2267	Monthly Excise Returns
EXRP	2270	Excise Analysis Reports
EXRQ	2693	Excise Return Enquiry
EXRT	2690	Extract Return Details
FHEQ	959	Trace History Where Used
FMSI	2082	Formula Issue/Receipt
FTEQ	959	Full Trace Where Used
FWHQ	958	Full Trace History
FWTQ	958	Full Trace Enquiry
GRCA	648	Cancel a GRN
GRCI	648	Manually Clear One GRN
GREN	1618	Goods Receipt Fast Entry
GRNC	902	Manually Clear GRNs
GRNQ	1845	Disp Goods Rec'd Details
GROR	1591	GRN Onsite Recording
GRQM	955	Maint GRN Qualif'g Data
GRSB	2114	Accept Goods Into Stock
GRSM	2074	Accept Goods Into Stock
GTMT	920	Mtain Trace Global Data
ICRR	1091	Record Reconciliation
INRD	2557	Delete Reconciliation
INRQ	2556	Reconciliation Enquiry
IPCR	1779	Consignment Stock Usage
IPCS	1030	Move Consignment Stock
IPSP	1009	Safety Stock Profile
LAAU	1032	Authorise Lot Approval
LACA	1032	Cancel Lot Approval
LBAM	2695	Loading Bay Management
LITD	2610	Lot/Item Ticket Details
LNUM	1599	Lot Number Allocation
LOCC	1816	Lot Cost Change
LOCM	2665	Maintain Lot Cost Detail
LOCQ	2666	Lot Cost Details Enquiry
LOCY	1816	Lot Cost Display
LOSP	2026	Lot Splitting/Grading
LTAC	1103	Cancel Lot Status
LTAU	1103	Authorise Lot Status
LTCM	2683	Maintain Lot Contents
LTLI	2605	Lot-to-Lot Issue
LTLQ	2604	Lot-to-Lot Enquiry
LTLR	2603	Lot-to-Lot Receipt
LTSC	1033	Lot Status Change
LTTL	2602	Lot Location Transfer
MBAM	2070	MBA Maintenance
PARC	1068	PO Archiving Parameters
PASM	2657	PURC Spending Limits
PASQ	1374	Spending Limits Enquiry
PBDQ	1057	Buyer Enquiry
PEEQ	1098	Supp. Perf. Last 12 Mth
PEPA	1100	Supp. Perf. for an Item
PESU	1099	Supplier Perf. Data
PEWE	1097	Performance Management
PEXD	1071	Enter Expediting Details

PEXS	1072	Supplier Expediting Hsty
PGRM	1066	PO Goods Rec. Parameters
PIAD	1090	Add a PI Count Record
PIAH	1093	PI Adjustments History
PIDC	1092	PI Discrepancy Calc'n
PIEQ	1062	Stock Counts Outstanding
PIRQ	1034	Request PI Counts
PITL	1035	PI Tolerance Limits
PLMH	1921	Pallet Movement History
PLMT	1847	Pallet Maintenance
PNUM	1086	Purc. Number Allocation
POPV	1065	PO Price Variance Params
PPHD	2429	Maintain a Parcel
PPLX	2427	Parcel Line Text
PPMQ	2430	Parcel Enquiry
PPOA	2428	Parcel Order Allocation
PPRQ	1202	Purchase Print Requests
PPTX	2429	Parcel Text
PPUN	2427	Unpack a Parcel
PQDY	1053	Display Quot'n Details
PRQM	1067	PO Reqs'n and Sup. Params
PTAL	1920	Pallets at All Locations
PUMM	1806	PO MRP Parameters
QRDH	1095	Quarantine Disposal Hist
QRNS	2001	Reject of Non-Inv Goods
RPOQ	2115	All Reqs for an Order
SBMN	2103	Supplier Batch Maint
SCDA	2521	Add Subcontract Data
SCEQ	1191	Approval Codes Enquiry
SLCM	2510	Stock Location Movement
SLMH	1016	Location Movemnt History
SOFI	2600	Filling Invoice
SPAU	1736	Authorise Item/Supp Data
SPBT	1843	Maintain Blanket Tol's
SPCA	1736	Cancel Item/Supp
SPDT	1844	Maintain Delivery Tol's
SPPM	1187	Maintain Item/Supp Price
SPPQ	1188	Item/Supp Price Enquiry
STIO	2525	Receive Transfer Order
STMV	2169	Movement Validation
STRF	1643	Stock Number Transfer
WRCA	2575	Warehouse Rent Calculate
WRCQ	2579	Warehouse Rent Enquiry
WRGN	2576	W'huse Rent Generation
WRIN	2577	Warehouse Rent Invoicing
WRMA	2581	W'huse Rent Management
WRMN	2578	W'hse Rent Housekeeping
WRRM	2572	Warehouse Rent Rates
WRRQ	2573	Warehouse Rates Enquiry
WRST	2574	Warehouse Rent Start

## 2.4.2 Look-Aside List (LAL) – Changed Screens / Transactions

The 'Transaction LALs.csv' file has been changed for the following screens / transactions:

PEPR	231	Print Purchase Enquiry LAL added to the Printer field
------	-----	--

---

PQMT	1049	Maintain Quotation Details LAL added to Buyer and Supplier LAL corrected.
------	------	--

### 2.4.3 New Look-Aside Lists

New look-aside list ZZZZ001CONSUFF (Find Consignment) has been added to allow a sales order and consignment suffix to be identified in separate fields. The LAL is currently available on the STIO Receive Transfer Order transaction (screen 2525).

New look-aside lists ZZZZ000PROJCODE (Find Project), ZZZZ000PLancode (Find Plan), ZZZZ000WPCODE and ZZZZ000ACTIVITYREF (Find Activity) have been added to various PPAC transactions to allow the display and selection of Projects, Plans and Activities.

### 2.4.4 Changed Look-Aside Lists

The Find Requisition look-aside list (ZZZZ000REQSNITEM) has been amended to show requisitions where a buyer has not been defined.

The Find Buyer look-aside list (ZZZZ000BUYER) has been amended to only show buyer details for the business currently in use.

The Find Purchase Order look-aside list (ZZZZ000PORDER) has been amended to include the print date of the purchase order.

## 2.5 Data Access

### 2.5.1 Support for New Versions of Database Software

TROPOS Web Client has been modified to support storage of the Web Client database on SQL Server 2005, and to allow connection to a TROPOS server database stored on SQL Server 2005 using either the SQL Native Client (SQLNCLI) or the SQL Server provider (SQLSRV32). TROPOS Web Console will continue to use the SQL Server provider when creating ODBC DSNs (data source names) for SQL Server databases.

TROPOS Web Client also supports the storage of the database on SQL Server 2000, Oracle 9i and Oracle 10g.

### 2.5.2 High-volume SQL Data

The TROPOS Web Client has previously encountered problems when a web page attempts to retrieve more than 4MB of data from the database using a SQL statement, which has necessitated changes to the configuration of the web server. This situation may be encountered when running look-aside-lists without first entering selection parameters.

The Web Client software has been amended to split large volumes of data into 4MB blocks and reassemble the data on the client machine to avoid this problem.

### 2.5.3 ODBC Command Timeout (SQL Server databases only)

The TROPOS Web Client and TROPOS Required Support Files have been amended such that the ODBC command timeout (the period after which a long SQL statement will fail) can be configured using the Web Console.

## 2.6 User Management

### 2.6.1 Username Report

The Username Report, a new utility, shows all usernames and, for each username, all the fields on the Web Client username table. The administrator may find it convenient to select the entire report and paste it into *Microsoft Excel* in order to remove unwanted columns, sort the data and print the result.

The report may only be run by the Web Client administrator. The error "Only the system administrator is allowed to run this page" is displayed if non-administrators find the utility on their menu and try to run it.

To add the page to a menu via the Navigation Wizard:

Add a new item: Heading	Username Report	[Go >>]
System Link	<input checked="" type="radio"/> an SSI utility	[Next >>]
File	Username Report [userrep.aspx]	[Next >>]
Launch Type	<input checked="" type="radio"/> Container	
TROPOS online session required	<input type="checkbox"/> (no)	[Finish]

### 2.6.2 Username Validation

Web Client usernames may now only consist of characters A-Z, a-z, 0-9, dot ".", hyphen and underscore. They must begin with an alphabetic character.

This change will not conflict with any existing usernames, since using characters other than these would have led to obvious errors in certain Web Client utilities. In effect, the change enforces a de facto standard.

### 2.6.3 Users per Role

The newly allocated or de-allocated username is now highlighted using the standard TROPOS highlighting colour (gold) to draw it to the attention of the administrator. It is also displayed in the visible portion of the screen rather than scrolling off the bottom.

## 2.6.4 Regenerate All Username Menus

This is a new utility which may be added to the menu using the Navigation Wizard as follows:

Add a new item: Heading	Regenerate All Username Menus	[Go >>]
System Link	<input checked="" type="radio"/> an SSI utility	[Next >>]
File	Regenerate All Username Menus [allpop.aspx]	[Next >>]
Launch Type	<input checked="" type="radio"/> Container	
TROPOS online session required	<input type="checkbox"/> (no)	[Finish]

When the utility is run, usernames are shown in a drop-down list in the format:

1 of 50 ahn [Adam NEWMAN]

where "ahn" is the username.

The first username is selected and the [Start] button is clicked. When the first user's menu has been regenerated, the utility automatically moves on to the second username and then the third, etc.

If it is necessary to interrupt this process, the administrator can click the [Stop] button and the utility will halt after regenerating the current menu. The administrator should then make a note of the last number processed so that the procedure can be started at the next number next time. The utility does not record how far it has reached and it is up to the administrator to begin again at the correctly numbered username.

The server script timeout limit is circumvented by the utility because for each new username, the regeneration page is re-submitted and starts its timeout period anew. This means that for a large number of usernames, perhaps with some big menus, the utility can be left alone to run its possibly quite lengthy course.

It should be noted that if a menu is regenerated on behalf of a user who is currently logged into the Web Client, the TROPOS quick code mechanism can not be guaranteed to function correctly. This is because the quick code is looked up on the newly regenerated menu and the (new) menu sequence number is returned to the client. The client then displays the numbered entry from its version of the menu - the unregenerated version - and this may not coincide with the new version. This temporary inconsistency is resolved as soon as the user logs out of the Web Client and back in again.

## 2.6.5 Fix User/Role Anomalies

It is possible, under exceptional circumstances, for records showing the allocation of roles to users, to refer to non-existent roles or non-existent users. In earlier versions of the Web Client, this condition caused an error during menu regeneration, but the condition is tolerated at this release.

The anomalous records can be removed by running the "Fix User/Role Anomalies" utility. It can be run at any time and reports the details of the records it has deleted or displays the message "No anomalous records".

To add the page to a menu via the Navigation Wizard:

Add a new item: Heading	Fix User/Role Anomalies	[Go >>]
System Link	<input checked="" type="radio"/> an SSI utility	[Next >>]
File	Fix User Role Anomalies [usrofix.aspx]	[Next >>]
Launch Type	<input checked="" type="radio"/> Container	
TROPOS online session required	<input type="checkbox"/> (no)	[Finish]

### 2.6.6 Maintain Users

Windows Domain and Windows Username have been added to the "Maintain Users" screen, along with a choice of TROPOS login modes: "Windows Automatic", "TROPOS Dialog" or "Either". The current "Web Client Login Mode" system parameter is also displayed and an option has been added to supply an arbitrary password to further protect newly added usernames.

The layout of this screen has been adjusted to accommodate the new fields.

### 2.6.7 User Profiles

When Windows authentication is in force, the user is no longer prompted for a username and password when running the "Profile → Amend" option. Instead, the Windows authentication credentials are validated and the user is taken directly to the "Edit profile" screen.

To amend a profile on behalf of another user, the administrator must use the "Edit Profile" link from the "Maintain Users" screen.

The "Edit Profile" screen has been enhanced to include default TROPOS server and database fields (which, if not blank, override the system parameter values), a choice of TROPOS login mode (if permitted by the system parameters) and the ability to load the current Windows domain and Windows Username.

## 2.7 Role Management

### 2.7.1 Roles per User

The selected Department and Username are now displayed below, rather than to the right of, their respective drop-down lists. This prevents the wrapping of text when either of these fields is exceptionally long.

The newly allocated or de-allocated role is now highlighted using the standard TROPOS highlighting colour (gold) to draw it to the attention of the administrator. It is also displayed in the visible portion of the screen rather than scrolling off the bottom.

### 2.7.2 Deleted Roles

Normally, a role is allocated to a user, the user regenerates the menu and the role is shown on the menu. If, however, the administrator subsequently deletes that role and the user's menu is not regenerated, next time the user logs in, the word "(deleted)" is now shown in the menu next to the role identifier.

The temporary anomaly is resolved as soon as the user's menu is regenerated, at which point the deleted role is removed from the menu altogether.

### 2.7.3 Unallocated Roles

There is a new utility to report and optionally delete unallocated roles.

Web Client roles are created (or imported) in isolation and are later allocated to one or more users. Roles can also be de-allocated from users, so it is possible to have a role that is not allocated to any user. Unallocated roles do no harm to the system except to lengthen unnecessarily the list of roles displayed by various utilities.

The purpose of the Unallocated Roles utility is to identify unallocated roles and offer them for deletion.

To add the page to a menu via the Navigation Wizard:

Add a new item: Heading	Unallocated Roles	[Go >>]
System Link	<input checked="" type="radio"/> an SSI utility	[Next >>]
File	Role Table - Report Orphans [tidyrole.aspx]	[Next >>]
Launch Type	<input checked="" type="radio"/> Container	
TROPOS online session required	<input type="checkbox"/> (no)	[Finish]

Deleting a role, in this context, deletes the role title but not the menu contents that were allocated to the role. Deleting the role title may, therefore, produce orphan menu entries (not allocated to any role) and the housekeeping process can be completed by using the Unallocated Menu Entries utility.

### 2.7.4 Export a Role

The "success" messages from the Export a Role utility have been enhanced to match the action undertaken. They now read:

- Role [Role Name] successfully exported
- Role [Role Name] successfully re-exported
- Role [Role Name] successfully removed from the export tables

### 2.7.5 Administrator Standard Role (ASR)

The Administrator Standard Role has been enhanced to include the new administrator utilities documented in these release notes. It was found that many administrators would

look for the "Role Modelling" link in the "Roles (ASR)" menu, so it has been placed there as well as in the "Content (ASR)" menu. Both entries link to the same utility.

The administrator standard role now contains entries as follows, changed entries are in bold and are described elsewhere in this document:

Web Client Administrator Functions (ASR)

Global Administrator Options (ASR)

Users and Moderators (ASR)

Maintain Users

Roles per User

Users per Role

Regenerate a User Menu

**Regenerate All User Menus 2.6.4**

User Profiles

Maintain Moderators

**Domains...**

**Allocate Domain to Users 2.10.7**

**Domain Compare with TROPOS 2.10.8**

Reports...

**Username Report 2.6.1**

User/Role Cross-reference

Moderator Report

User Log

Roles (ASR)...

Maintain Roles

Contents per Role

Roles per User

Users per Role

Roles per Jaw

Delete a Role and all its Contents

**Role Modelling**

**Unallocated Roles 2.7.3**

Import/Export Roles...

Load a Role

Import a Role

Export a Role

Dump a Role

Reports...

User/Role Cross-reference

Jaws (ASR)...

Maintain Jaws

Roles per Jaw

Content (ASR)...

Navigation Wizard

Role Modelling

Order Contents within a Role

Maintain Chains

**Unallocated Menu Entries 2.8.7**

**Quick Home Page 2.10.2**

Reports...

Navigation Finder

Report Chains

Modelling vs. Navigation Wizard

TROPOS Tasks (ASR)...

Authorise a Role on TROPOS

- Authorise a User on TROPOS
- Additional Authorisation
- Hide Authorisation Menu Entries 2.8.1**
- Import New Transactions
- Reports...
  - Transactions per Role
  - Look-aside List Report
  - TROPOS Screen Title Report
- Bulletins and Forums (ASR)...
  - Bulletin List
  - Forum List
  - Allocate Bulletins and Forums
  - Reports...
    - Bulletin and Forum Statistics
- Phone List (ASR)...
  - Phone List
  - Maintain User Phone Numbers
  - Maintain Room Phone Numbers
  - Reports...
    - Phone List - Print-Ready Version
- Housekeeping (ASR)...
  - Register LALs on TROPOS
  - Load TROPOS Help Titles
  - Check Authorisation Dates
  - Set the Default Jaw
  - Reset TROPOS Menu Types
  - Set USERTYPE to W 3.6.2**
  - Fix User/Role Anomalies 2.6.5**
- Developers (ASR)...**
  - Source Code Finder 2.9.3**

These changes can be implemented by loading and importing the Administrator Standard Role (file *AdministratorStand00.txt*). Note that the Administrator Standard Role is recognised by the Web Client as a special case so that when it is imported, it replaces the existing Administrator Standard Role. Administrators who have already been allocated the role then need to regenerate their menu in the normal way.

To replace other roles, it is currently necessary to delete the old role and all its contents, import the new role and then allocate the new role to suitable users.

## 2.8 Menu Management

### 2.8.1 Hide Authorisation Menu Entries

#### 2.8.1.1 Overview

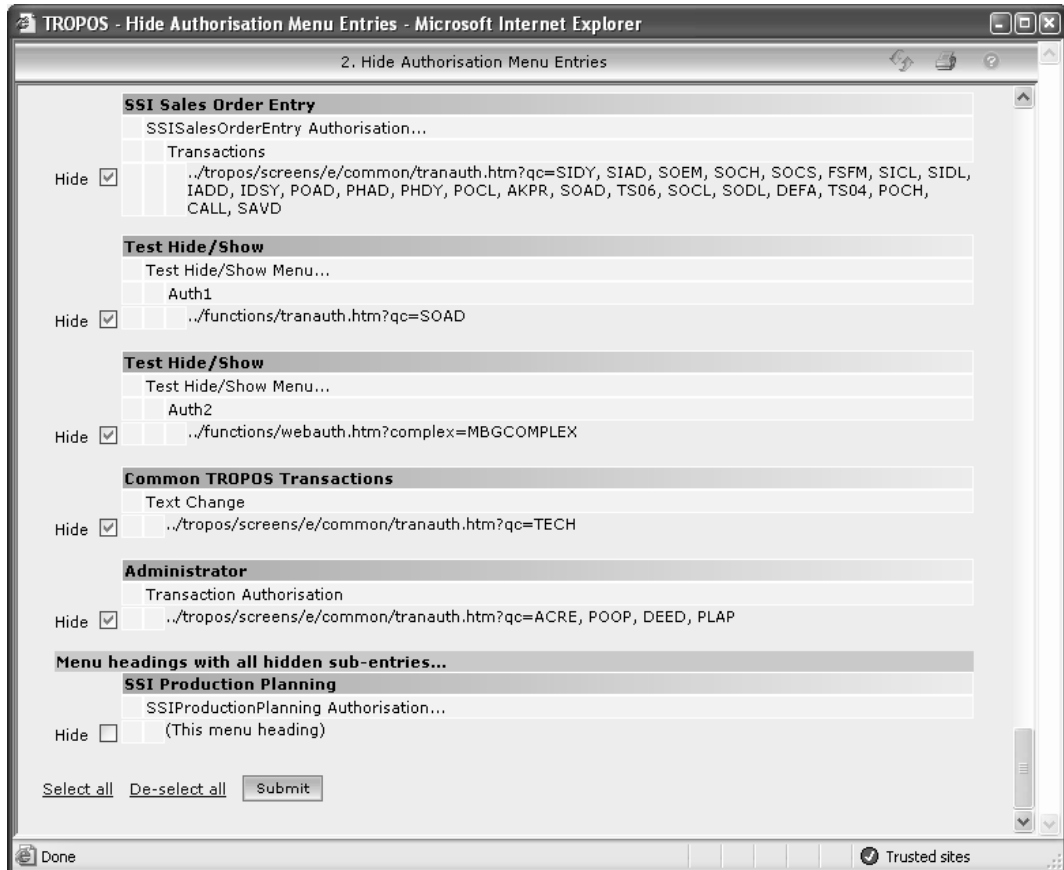
For Role-based Applications (RBAs) and for certain other TROPOS elements such as DPMU documents, it is necessary to have an artificial menu entry on the Web Client to hold the identifiers of the transactions, complex transactions, DPMU documents, etc. that are to be authorised. From the user's point of view however, these "authorisation" menu entries serve no useful purpose and it is now possible to hide them.

### 2.8.1.2 Hide Authorisation Menu Entries Utility

This is a new utility to hide (or un-hide) authorisation menu entries and may be added to the menu using the Navigation Wizard as follows:

Add a new item: Heading	Hide Authorisation Menu Entries	[Go >>]
System Link	☉ an SSI utility	[Next >>]
File	Hide Authorisation Menu Entries [hideauth.aspx]	[Next >>]
Launch Type	☉ Container	
TROPOS online session required	<input type="checkbox"/> (no)	[Finish]

When the utility is run, it takes a few moments to read through all available navigation records and automatically select authorisation menu entries for hiding (see picture below).



Individual menu entries can be selected for hiding, but it will probably be more convenient to scroll to the bottom of the screen, click "Select all" and then [Submit].

The result of marking a set of menu entries as "hidden" may be to create an empty menu leg. These are shown under the heading "Menu headings with all hidden sub-entries..." (see the above screen shot). On a second pass, using "Select all" and [Submit] will hide the empty menu leg headers as well.

### 2.8.1.3 Navigation Wizard

Single menu entries can be marked as hidden using the Navigation Wizard. This will be necessary for authorisation menu entries not presented by the "Hide Authorisation Menu Entries" utility. The utility selects URL's containing "webauth.htm" or "tranauth.htm", so if a customised URL of "myauth.htm" has been used, it will not have been selected by the "hide" utility.

To hide a single menu entry, follow the normal Navigation Wizard route to the "finish" screen:

The screenshot shows a web browser window titled "TROPOS - Content Management - Commit - Microsoft Internet Explorer". The main content area is titled "Maintain Top Level Contents" and contains a form for "Authorisation (New Menu)". The form fields are as follows:

- Heading: SSI Sales Order Entry Authorisation
- Launch Type:  Follow Me,  Container,  Application
- Specific window size: Width 0 px, Height 0 px, Full width , Full height
- Always use a separate window:
- TROPOS online session required:
- Display on user's menu:  Yes,  No (authorisation entry)
- Authorise from:  now (27/4/2007),  this (inclusive) date 30/11/2005
- until:  it is deleted (31/12/2050),  this (inclusive) date 31/12/2050

At the bottom of the form are two buttons: "<< Back" and "Finish". The "Finish" button is highlighted with a blue border.

There is a new radio button in the middle of the screen: "Display on user's menu - Yes/No" which is used to hide or un-hide the menu entry.

### 2.8.1.4 Where Can Hidden Menu Entries Be Seen?

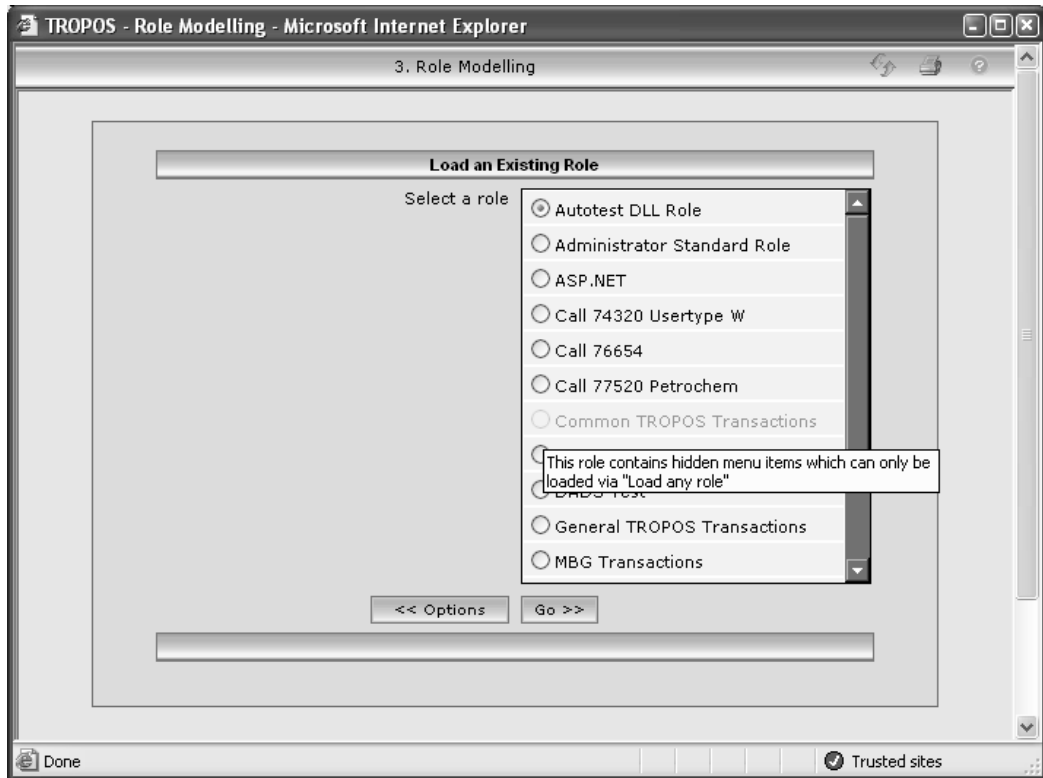
Hidden menu entries are only excluded from the user's actual menu. They are still visible in the Navigation Wizard, modelling, "Contents per Role", etc. The hidden menu entries are still required for TROPOS authorisation. The "Authorise a Role" utility processes all menu entries regardless of whether or not they are hidden from the user.

### 2.8.1.5 Modelling

Hidden menu entries are excluded from the user's menu when it is regenerated. This means that if a role was to be loaded from the current menu using "Load one of your live roles", the hidden menu entries would be absent and committing the model would delete

them permanently. Consequently, roles containing hidden menu entries can not be loaded into modelling via the "Load one of your live roles" option.

Such roles are greyed out in modelling and a tooltip on the radio button gives an explanation:



As the tooltip suggests, the alternative "Load any role" option must be used instead. This loads the navigation records rather than the menu records and preserves their hidden status.

The modelling "Report a model" option shows hidden menu entries as "Hidden" in the "TROPOS session" column.

Note that modelling has no option to hide or un-hide menu entries. This must be done via the "Hide Authorisation Menu Entries" utility or the Navigation Wizard.

## 2.8.2 Separate Windows

### 2.8.2.1 Specific Window Size

The screenshot shows a web browser window titled "TROPOS - Content Management - Commit - Microsoft Internet Explorer". The main content area displays a form titled "Authorisation (NewMenu)". The form has the following fields and options:

- Heading:** SSI Sales Order Entry Authorisation
- Launch Type:** Radio buttons for "Follow Me" (selected), "Container", and "Application".
- Specific window size:**
  - Width: 0 px
  - Height: 0 px
  - Full width:
  - Full height:
- Always use a separate window:**
- TROPOS online session required:**
- Display on user's menu:** Radio buttons for "Yes" and "No (authorisation entry)" (selected).
- Authorise from:** Radio buttons for "now (27/4/2007)", "this (inclusive) date" (selected, with date 30/11/2005), and "until".
- until:** Radio buttons for "it is deleted (31/12/2050)" and "this (inclusive) date" (selected, with date 31/12/2050).

At the bottom of the form are two buttons: "<< Back" and "Finish".

The "Specific window size" parameters on the "finish" screen of the Navigation Wizard (above) have been enhanced to include "Full width" and "Full height" checkboxes. When a menu entry is defined as "Full width", and the user clicks the "separate window" icon on the TROPOS Web Client menu, the available width of the current screen is dynamically evaluated and the separate window is opened at that width. Similarly, if "Full height" is defined, the separate window occupies the full height of the current screen.

Both "Full width" and "Full height" may be defined at the same time. Selection of "Full width" or "Full height" will disable ("grey out") the "Width" or "Height" field respectively.

### 2.8.2.2 Always Use a Separate Window

The "Always use a separate window" option on the "finish" screen of the Navigation Wizard (above) means that the user has no choice but to launch the menu entry in a separate window. When this option is not selected, the user has the choice of launching the menu entry in the main contents frame or in a separate window.

Certain applications are known to require more space than is generally available in the main contents frame, and defining such menu entries as always using a separate window prevents the user from accidentally launching them in the contents frame.

## **2.8.3 Navigation Wizard**

### **2.8.3.1 System Links - List of Utilities**

When adding a system link to the menu, refreshing the list of available utilities has been made optional and defaults to "no". This speeds the process up by using the current list of utilities. It is only necessary to refresh the list when a new Web Client release has been installed.

### **2.8.3.2 System Links - Launch Type**

On the last page of the Navigation Wizard, a system link now defaults to a Launch Type of "Container" rather than "Follow Me" since the majority of system utilities require a container page.

### **2.8.3.3 Spaces in TROPOS URLs**

Spaces are invalid in TROPOS URLs and by default are not included. However, it is possible for the user who is adjusting a URL (perhaps to limit the set of quick codes), accidentally to introduce a space. The Navigation Wizard has been enhanced to remove any spaces from TROPOS URLs and to inform the user that this has been done.

### **2.8.3.4 Bulletin or Forum Link Maintenance**

The "URL Selected" is now displayed in a textarea field which automatically manages the wrapping of long URLs that would otherwise distort the appearance of the rest of the screen.

## **2.8.4 Modelling**

### **2.8.4.1 Spaces in URLs**

In contrast to the Navigation Wizard described above, URLs in modelling are free format and may possibly contain spaces. However, in case an embedded space has been introduced to the URL unintentionally, a warning is displayed on the modelling "Commit" page. If appropriate, the user can then correct the URL before committing the model.

### **2.8.4.2 Sample Template**

The menu entries used in the sample template have been made more realistic. They are now:

- TROPOS screen 0044 (IDSY, IADD, ICHG, IDEL and ITTX) - "Follow Me".
- A report of all the ASCII characters in various fonts - "Container".
- The SSI website - "Application".

## **2.8.5 Menu Regeneration**

### **2.8.5.1 Speed**

The menu regeneration page has been made more efficient.

### 2.8.5.2 Greying Out

When menu regeneration has finished, the menu regeneration page now "greys out" while the navigation frame is repainted. Once the redisplayed menu is ready for use, the menu regeneration page goes back to normal ("un-greyled out"). This indicates to the user *when* the menu can be clicked, thereby avoiding the message "Please wait for the navigation frame to complete loading".

### 2.8.5.3 Locking

The menu regeneration utility has been enhanced to recognise the condition where a user runs it twice in quick succession. The second time, the user is not asked to wait 180 seconds.

### 2.8.6 Switching Navigation Modes

When switching between Explorer or Jaws mode and Dynamic mode, the connection to the TROPOS server is now kept open rather than being closed and the standard home page (*start.aspx*) is displayed to give a common starting position for all navigation modes.

### 2.8.7 Unallocated Menu Entries

There is a new utility to report and optionally delete unallocated menu entries.

Web Client menu entries consist of 1-level, 2-level or 3-level "legs" which are allocated to one or more roles. The legs can be de-allocated so that they do not appear on any role. By definition, a menu leg that is not allocated to a role does not appear on any user's menu and could reasonably be deleted.

The purpose of the Unallocated Menu Entries utility is to identify these unallocated legs ("orphans") and offer them for deletion. Orphan menu entries do no harm to the system except to lengthen unnecessarily the lists of contents in "Contents per Role" and the Navigation Wizard. The intention of this utility, therefore, is to provide an easy way of housekeeping redundant menu legs.

Note that a menu leg currently under development may appear on the list of orphans because it has not yet been allocated to a role. Clearly, such menu legs should not be selected for deletion since there is no "undelete" option to get them back again.

To add the page to a menu via the Navigation Wizard:

Add a new item: Heading	Unallocated Menu Entries	[Go >>]
System Link	<input type="radio"/> an SSI utility	[Next >>]
File	Navigation Table - Report Orphans [tidynav.aspx]	[Next >>]
Launch Type	<input type="radio"/> Container	
TROPOS online session required	<input type="checkbox"/> (no)	[Finish]

## 2.9 Search Facilities

### 2.9.1 General Search (Magnifying Glass Icon)

The utility to search the current menu has been enhanced so that the checkbox and the label that goes with it are grouped together using a paler background colour. Also the "click here" link is now followed by a blank line so that the underlining is always visible.

### 2.9.2 Full Document Searching

This option is automatically configured by the TROPOS Web Console. It is switched on via the administrator global options screen and is invoked by the user from the "General Search" screen (magnifying glass icon). It allows searching of all files that were uploaded to the web server using the Web Client upload facility. (Files are placed in the *root/contents* folder when they are uploaded.)

The results of searching the "contents" folder for a particular string have been enhanced to resemble the output from popular internet search engines.

### 2.9.3 Source Code Finder Utility

#### 2.9.3.1 Overview

The Source Code Finder utility is run from the Web Client menu and is used to locate files within the Web Client folder structure (e.g. files at the *TroposWeb* level or below) that contain a particular string. Its purpose is to identify files that the developer may need to amend because those files contain the string in question (for example if some pages contain a hard-coded company name which has changed).

It is an entirely generic utility that can be used to locate any suitable string.

#### 2.9.3.2 Adding to the Web Client Menu

The Source Code Finder utility can be added to the Web Client menu using the Navigation Wizard, as follows:

Add a new item: Heading	Source Code Finder	[Go >>]
System Link	<input checked="" type="radio"/> an SSI utility	[Next >>]
File	Source Code Finder Utility [finder0.aspx]	[Next >>]
Launch Type	<input checked="" type="radio"/> Container	
TROPOS online session required	<input type="checkbox"/> (no)	[Finish]

#### 2.9.3.3 Running the Utility

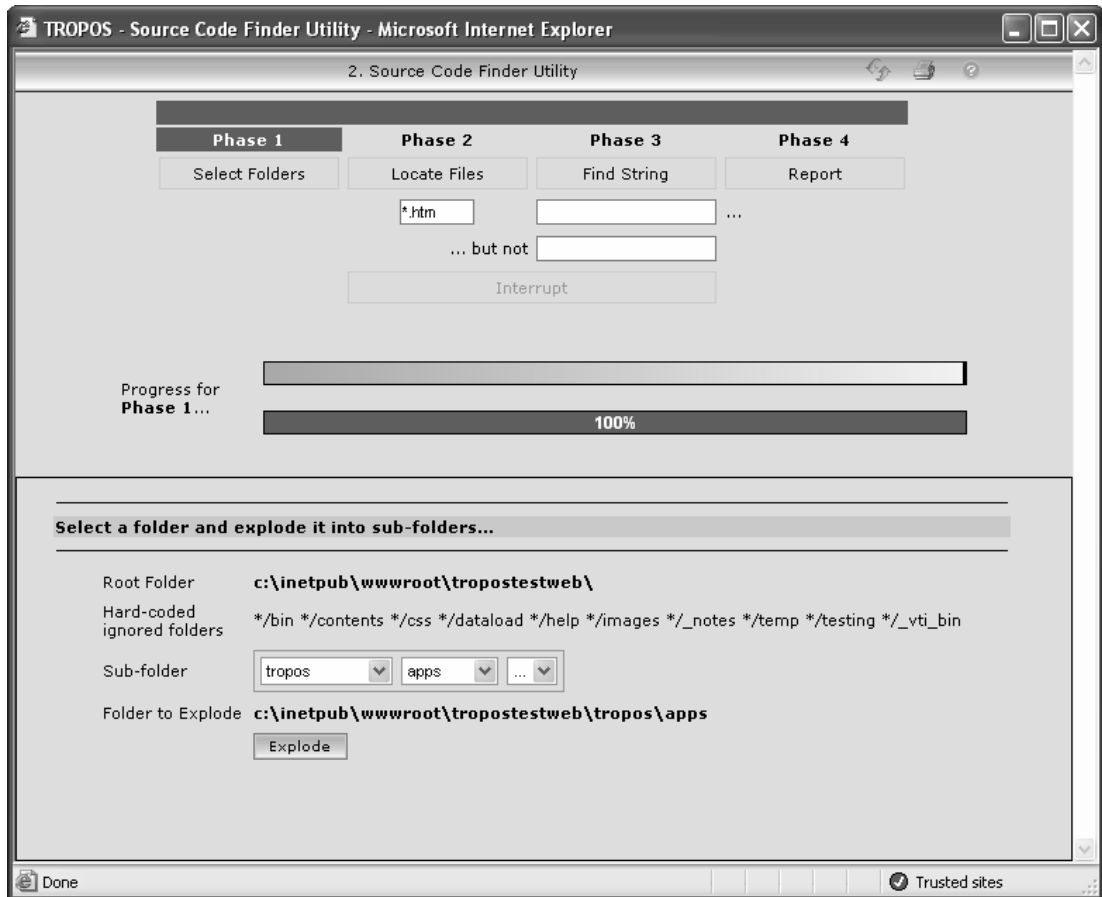
The utility has a number of phases:

1. Select the folder(s) to be searched
2. Locate files matching a wildcard specification in the nominated folder(s)

3. Search the file(s) for the required string
4. Report the results.

### 2.9.3.4 Phase 1 - Select Folders

This phase selects a folder and explodes it into sub-folders.



**Root Folder.** The Windows version of the root folder is displayed here  
e.g. for *http://myserver/tropostestweb*  
**C:\inetpub\wwwroot\tropostestweb\** is displayed.

**Hard-coded ignored folders.** Some folders are assumed to contain files that cannot reasonably be searched, either because they contain binary data (images) or because they cannot be amended by the developer (CSS files). For efficiency, these folders are always omitted from the search.

**Sub-folder.** The user can limit the search to a particular folder and only search that folder and its sub-folders. Selecting a sub-folder from the drop-down list displays the next set of sub-folders (up to a maximum of 6 sub-folders) in a drop-down list. The "dot-dot-dot" ("...") option can be used to travel back up the folder hierarchy, for example step 4 below:

<b>1. Initial position:</b>	Sub-folder Folder to Explode	... c:\inetpub\wwwroot\tropostestweb
<b>2. Select "tropos":</b>	Sub-folder Folder to Explode	tropos ... c:\inetpub\wwwroot\tropostestweb\tropos
<b>3. Select "apps"</b>	Sub-folder Folder to Explode	tropos apps ... c:\inetpub\wwwroot\tropostestweb\tropos\apps
<b>4. Select "..." from the "apps" list</b>	Sub-folder Folder to Explode	tropos ... c:\inetpub\wwwroot\tropostestweb\tropos

**Folder to Explode.** For clarity, the root folder and the selected sub-folders are displayed as a single string. This is the folder that will be searched, along with its sub-folders (if any).

**[Explode].** Clicking the [Explode] button finishes phase 1 by saving the name of the currently selected folder and locating its sub-folders.

### 2.9.3.5 Phase 2 – Locate Files

Identify \*.xxx files in the folder hierarchy.

The folder to be searched is now displayed at the top of the window above the labels "Phase 1" to "Phase 4".

The files to be located must be of a particular type (e.g. \*.htm or \*.js) which is entered by the user. The default is \*.htm. A file type must be entered (i.e. \*.\* cannot be specified).

**Locate Files.** When the [Locate Files] button is clicked, files with the named file type are found and their names are recorded in the temporary Source Code Finder database.

**Interrupt.** Once the [Locate Files] button has been clicked, the [Interrupt] button becomes active. This can be clicked to halt the process of locating files (usually only required if the user realises that an error has been made in defining the folder or the file type). The button legend momentarily changes to "Interrupt pending..." and then processing stops at the end of the current folder.

Interrupting the process leaves the Source Code Finder database in an intermediate state where some, but not all, of the files in the folder structure have been identified. At this stage, the file type can be corrected and the [Locate Files] button can be clicked to restart the file location process. Alternatively, the user can go back to phase 1.

**Hard-coded ignored files: (None).** At a future release, it may be decided to ignore specific files when searching the source code. At this release, however, no files are excluded from the search.

### 2.9.3.6 Phase 3 - Find String

There are 3 options for finding a string in the set of files from phase 2:

Option		Find String		Locates Files ...
1.	... but not	abc	...	Containing "abc"
2.	... but not		...	Not containing "xyz"
		xyz		
3.	... but not	abc	...	Containing "abc" but not containing "xyz"
		xyz		

The "Find String" is not case sensitive.

[Interrupt]. The [Interrupt] button fulfils the same function here as for phase 2 and is primarily intended for halting the search when the user realises that a mistake has been made in phases 1 or 2.

### 2.9.3.7 Phase 4 - Report

The results of running phases 1, 2 and 3 are displayed in the main Web Client window. It shows the parameters that were used during the search and lists the files that fulfil the search criteria. This report can be printed or copied and pasted into, say, *Notepad*.

### 2.9.3.8 Re-running Phases

When an earlier phase is re-run, it initialises the results of the subsequent phases. This means that a report showing, say, files containing "abc" is lost when the next report, perhaps showing files containing "xyz", is created.

## 2.10 Utilities

### 2.10.1 Standard Home Page

The standard Web Client home page *start.aspx* has been enhanced as follows:

- The "view menu changes" button legend now toggles between "View" and "Hide".
- The main image has been centred in the content frame. Very large images will touch the silver bar at the top and the navigation frame to the left, so that a maximum amount of the image can be seen.
- The redundant text "you can do one of the following" has been removed.
- The three main buttons have been resequenced and now say [View Changes] [Regenerate Now] and [Regenerate Later] rather than [Regenerate] [View Changes] and [Close].
- When menu changes are reported, labels "Old Value" and "New Value" are only used if both an old value and a new value exist.

## 2.10.2 Quick Home Page

SSI customers often choose a company image as the default home page. Detailed images can be quite large and if the Web Client is being accessed over a slow dial-up connection, can take a long time to display.

To avoid this delay, an alternative home page has been provided which only takes a short time to display. The page needs to be added to the user's menu and then selected as that user's home page via the Web Client site map utility.

To add the page to a menu via the Navigation Wizard:

Add a new item: Heading	Quick Home Page	[Go >>]
System Link	<input type="radio"/> an SSI utility	[Next >>]
File	Home Page with Logos [hometrop.htm]	[Next >>]
Launch Type	<input type="radio"/> Container	
TROPOS online session required	<input type="checkbox"/> (no)	[Finish]

## 2.10.3 Phone List - Sorting

The sorting of columns on the Phone List has been enhanced so that an up-arrow character (↑) can be clicked to sort the column in ascending sequence and a down-arrow character (↓) can be clicked to sort the column in descending sequence.

When a column is sorted, blank data is relegated to the foot of the column below a heading of "**Blank...**".

Resources on the phone list (e.g. rooms, as opposed to people) are now identified in the "Status" column as "(Resource)" rather than "User".

## 2.10.4 Key Performance Indicators (KPIs)

Minor usability enhancements have been made to the TROPOS KPI Grapher utility:

- The status message, e.g. "The graph has been modified, remember to save your changes" now appears directly below the graph instead of at the end of the screen where it may need to be scrolled into view.
- The identity of the current graph has been added so that it appears to the right of the status message.
- The option buttons at the foot of the screen are raised when the cursor passes over them and depressed when clicked. This reminds the user what the current option is.
- The word "Trial" has been added to the right of the options arrow character to remind the user that changes are not made permanent until the graph is saved.
- If not authorised, the user is reminded of the necessity of being authorised for the TRDY (Transaction Enquiry) transaction when using KPIs. The reminder is a message that replaces the display of the graph itself.

### 2.10.5 URL Conversion

The URL conversion utility is run outside the framework of the Web Client by entering its URL directly into the Internet Explorer address field, e.g.:

```
http://myserver/troposweb/functions/asp2aspx.aspx
```

It is primarily used to convert URLs from Web Client version 1.1.0 to version 1.2.0 where the ".asp" filename extension becomes ".aspx" (as documented in the installation notes). However, it has an additional facility for replacing "old" URLs by "new" URLs. This is likely to be of use when a whole Web Client system is moved from one server (old) to another (new).

For example, if *troposweb* is moved from *oldserver* to *newserver*, the string "http://oldserver/troposweb" can be replaced by "http://newserver/troposweb".

### 2.10.6 Removing Null Values

The "no nulls" utility is run outside the framework of the Web Client by entering its URL directly into the Internet Explorer address field, e.g.:

```
http://myserver/troposweb/functions/nonulls.aspx
```

It can be run at any time and replaces null values in the Web Client database as follows:

- Null text is replaced by a single space
- Null numeric fields are replaced by zero
- Null dates are replaced by conventional string "0000\_00\_00\_00\_00\_00" (YYYY\_MM\_DD\_hr\_mn\_sc).

At this release, null values can not be tolerated by certain Web Client utilities, so it is necessary to remove the null values. The procedure for running "no nulls" is documented in the installation notes for this release.

### 2.10.7 Allocate Domain to Users

There is a new utility to allocate a Windows domain and Windows username to several users at a time, by department or "all departments".

This utility appears on the Administrator Standard Role but can be added to other roles using the Navigation Wizard, as follows:

Add a new item: Heading	Allocate Domain to Users	[Go >>]
System Link	<input type="radio"/> an SSI utility	[Next >>]
File	Allocate Domains to Users [domenq.aspx]	[Next >>]
Launch Type	<input type="radio"/> Container	
TROPOS online session required	<input type="checkbox"/> (no)	[Finish]

## 2.10.8 Domain Compare with TROPOS

Windows authentication values (domain, user and TROPOS login mode) are held on the Web Client database and on each TROPOS database (version 3.1.0 only). There is a new utility to compare the Web Client values with those on a specific TROPOS database and optionally to update the TROPOS database with the Web Client values.

This allows the administrator to set up Windows authentication data on the Web Client and then synchronise it with matching usernames on the TROPOS server. Users are selected by department or "all departments".

This utility appears on the Administrator Standard Role but can be added to other roles using the Navigation Wizard, as follows:

Add a new item: Heading	Domain Compare with TROPOS	[Go >>]
System Link	<input type="radio"/> an SSI utility	[Next >>]
File	Compare Web Client and TROPOS Domains [domcomp.aspx]	[Next >>]
Launch Type	<input type="radio"/> Container	
TROPOS online session required	<input checked="" type="checkbox"/> (yes)	[Finish]

## 2.10.9 Obsolete Utility URLfix

The *urlfix.aspx* utility is now obsolete and has been replaced by a page of the same name that simply displays a message to that effect. It will be removed entirely at a future release.

## 2.11 Help Facilities

### 2.11.1 TROPOS Help

The help finder for TROPOS transactions, screens, datanames and run names has been changed to default to the "Look for existing help before generating" option. This means that the user will rarely see the "Help file does not exist" error, since help is now generated by the first user who looks for it.

The "Help file does not exist" screen has also been enhanced to give the user advice on how to generate help:

"Select a different radio button and then click the [Find >>] button (above) to generate the help file now".

### 2.11.2 TROPOS Help Generator

This utility, which is launched from the TROPOS Web Console, has been made compatible with .NET technology and legacy file naming has been removed.

### 2.11.3 TROPOS Screen Template - Help

The screen template file (*tropos.txt*), used by TROPOS Application Designer and TROPOS Web Client when generating screen HTML files, has been enhanced so that the identity of the standard TROPOS help file that goes with a screen is hard-coded when the screen is generated, rather than being derived from the screen file name. This means that if the screen is subsequently renamed during customisation, the location of the help file is still known and the standard TROPOS help can still be reached via the silver bar "help" icon.

## 2.12 Additions to the System Frame

### 2.12.1 Hide/Show the Navigation Frame

There is a new button in the Web Client system frame to the right of the [Login] button, labelled "Hide". Clicking the [Hide] button causes the navigation frame to be hidden so that the main contents frame can occupy the whole width of the screen. The button text "Hide" then becomes "Show" and clicking the button again brings the navigation frame back into view.

This feature is useful when the page in the main contents frame is so wide that it causes left-right scrolling.

Whilst hidden, the navigation frame still functions "normally" so that, for example, a quick code entered in the system frame will still display its TROPOS screen and "follow me" to the correct place in the menu.

### 2.12.2 Set Username to 'default' When Logging Off

There is a new button in the Web Client system frame to the right of the [Disconnect] button and the traffic lights icon, labelled "Clear". Clicking the [Clear] button signals the user's intention of setting the Web Client username to "default" when the browser session is closed.

This feature is of use when the Web Client has been configured not to require a password for each new browser session, and two different users share the same PC. The first user clicks the [Clear] button before logging out, thereby causing the second user to start the next browser session as the "default" user. The second user then clicks the [Login] button to re-login to the Web Client with the required username. The second user would also click [Clear] before logging out.

## **3 Web Client Corrections at the 1.2.0 Release**

### **3.1 User Management**

#### **3.1.1 Change Password at Login**

An error converted the username to lowercase when a user had a blank Web Client password at login, which prevented entry of a new password unless the username was all-lowercase; this error affected Oracle and SQL Server databases only. The software has been corrected.

#### **3.1.2 Mixed Case Usernames**

If the Web Client is configured to use an *Access* database, usernames are not case sensitive. This means that the administrator can define, say, an upper case username and then the user can successfully login to the Web Client using the lower case version of that username. Upper and lower case usernames are equivalent.

However, this led to some anomalies when the underlying code was looking for a username of a specific case during profile and password maintenance. The spurious error message "you may only change your own password" was sometimes seen and the profile "change my password" link was sometimes missing. These anomalies have been resolved by making the *Access* username truly case insensitive.

#### **3.1.3 Regenerate a User Menu**

This utility is used by the administrator to regenerate a user's menu on their behalf. Consequently, the current menu (the administrator's menu) is not refreshed when the utility has finished. However, if the administrator selects the administrator's own menu for regeneration, the current menu will now be refreshed when the utility has finished.

#### **3.1.4 Sequence of User Profile Roles**

The list of roles shown on the "View Profile" option was sequenced in an arbitrary fashion. It has been changed to show the roles in alphabetical order.

#### **3.1.5 Edit Profile - Homepage URL**

The "Edit Profile" screen has been slightly rearranged so that the Homepage URL is displayed on a line of its own. This means that very long URL strings no longer distort the layout of the rest of the screen.

#### **3.1.6 Shadow Username Data**

If a Web Client username was deleted and then subsequently re-added, it would inherit some of the old data relating to the original instance of the username. This has been corrected so that when a username is deleted, all Web Client data relating to that username is deleted.

## 3.2 Role Management

### 3.2.1 Importing Roles Containing Single Quote

Roles containing the single quote character in their titles or menus can now be successfully imported into the Web Client. Previously, the error "Operation is not allowed when the object is closed" prevented the import from succeeding.

### 3.2.2 Contents per Role

The wording on this utility has been changed to make it clearer. "Select role to assign contents, from ..." has become "Select a role" and "Role" has become "Assign contents to role".

### 3.2.3 Modelling Contention

The Web Client has been prevented from allowing more than one user to model the same role. Roles that are already being modelled are greyed out for subsequent users of the modelling utility and have a radio button tooltip of "Already being modelled by *username*".

## 3.3 Menu Management

### 3.3.1 Web Server File Upload

The utility to upload a file from the network to the web server, did not allow file names containing the ampersand ("&") character. This has been corrected so that ampersand in a file name does not cause an error.

### 3.3.2 Allocate Bulletins and Forums

Cosmetic and textual changes have been made to the Bulletin Board and Forum Allocation utility to clarify its functionality. "Add selected" has become "Allocate", "Delete selected" has become "De-allocate", a line of hyphens has been introduced to delimit bulletins from forums on the drop-down list and username has been appended to first name and surname for ease of recognition.

### 3.3.3 No Default Home Page

If the user selects a particular default home page and then that page is removed from the menu, the next time the user logs in to the Web Client, the message "Warning: Profile homepage *URL* is no longer on your menu" is displayed in the status bar and the standard home page (*start.aspx*) is shown in the main frame. Previously, these circumstances would produce the error "Your key is not on the database".

### 3.3.4 Sitemap

The Web Client sitemap is used to select the user's home page. If the URL chosen happened to be duplicated in another part of the user's menu, it was not highlighted to indicate that it was the home page. This has now been corrected so that the user's home page is always highlighted using the standard TROPOS highlighting colour (gold).

A less-than character (" $<$ ") was being displayed between the two columns of sitemap data. This has been removed.

The message "Your new homepage has been successfully saved" now appears outside the scrolling area so that it is always easily seen.

### **3.3.5 Next Action Duplication**

If the same top level menu entry was included in two different roles and it was chained to in both those roles, the "Next Action" field at the foot of the navigation frame would show the menu entry twice. This has been corrected so that it only appears once.

### **3.3.6 Quick Code Not on Your Menu**

When using, for example, deferred processing (DEFER), the TROPOS quick code was being incorrectly identified, causing the text of the "quick code not on your menu" message also to be incorrect. This error has been rectified.

The same message was also sometimes erroneously displayed when chaining from one TROPOS transaction to another was enforced by the TROPOS server, for example from PHAD (Add a Purchase Order Header) to POAD (Add a Purchase Order Line). This has been corrected.

## **3.4 Cosmetic Changes**

### **3.4.1 Tool Bar Gap**

Many Web Client windows are obliged to leave a gap on the right hand side to allow for a potential scroll bar. The tool bar (silver bar) at the top of the window, therefore, does not stretch all the way across. All native Web Client screens now have tool bars that stretch all the way across the top of the screen. These changes do not apply to screens which have previously been customised.

An additional amendment has been included which allows the size of the content frame to shrink and expand if the main Internet Explorer window is dragged to a different size. Previously, the content frame was frozen at the size it opened.

## **3.5 Modified Utilities**

### **3.5.1 Phone List - Extension Number Maintenance**

There was an error when maintaining telephone extension data whereby the "Mobile" field was populated with the data from the "First Name" field. This has been corrected.

The e-mail address field was being ignored on update so that it always remained the same. This too has been corrected.

### **3.5.2 Exclude All Other Users**

The "Exclude All Other Users" option on the Global Administrator Options page was failing to take effect because of a coding error. This has now been rectified.

## 3.6 TROPOS Server-related Modifications

### 3.6.1 Import New Transactions

#### 3.6.1.1 Custom LALs.csv

The Import New Transactions utility on the TROPOS Tasks (ASR) menu of the Administrator Standard Role is run to load TROPOS transactions, look-aside lists (LALs) and batch programs into the Web Client to make them available to the Navigation Wizard and Modelling. The utility (*loada01.aspx*) has been enhanced to include customised look-aside lists which are defined in file *Custom LALs.csv* in the root folder of the Web Client.

#### 3.6.1.2 Bespoke Module

The Import New Transactions utility has also been enhanced with an option to exclude transactions from the TROPOS Bespoke module (BESP). The default is to include BESP.

### 3.6.2 Authorise a Role - Web Role

Prior to TROPOS release 3.0.1, roles defined on the TROPOS server database were given a "User Type" (dataname USERTYPE) of "R" for "Role" (as opposed to "U" for "User"). If a particular TROPOS identity was allocated a large number of roles, the error "Too many roles" and then "Server has failed" might be produced. TROPOS was storing type "R" role names ready for potential TROPOS mailing, but the storage area was limited.

This problem has been resolved by increasing the size of the storage area and by introducing a User Type of "W" to indicate a "Web Role". A Web Role is never the target of TROPOS mail and so it can be excluded from the storage area by the software. The only purpose of setting User Type "W" is to exclude the role from consideration for TROPOS mail. It has no effect on the Web Client.

The Web Client "Authorise a Role" utility looks for DASL code USERTYPE value "W", and if it is found, creates any new roles on the TROPOS server with a User Type of "W". If the DASL value is not found, User Type "R" is used instead.

Administrators who have been experiencing problems of this kind should do the following:

1. Run the DASL transaction for dataname USERTYPE and check that value "W" (Web Role) exists on the TROPOS server database. If it does not, then TROPOS server release 3.0.1 or later has not yet been installed, so the next step is irrelevant and should not be attempted (it will do no harm but will produce standard error messages).
2. Create and run the "Set USERTYPE to W" menu entry. This runs an AICH (Identity Change) transaction on the TROPOS server database for each Web Client role and changes its User Type from "R" to "W". The identity that runs "Set USERTYPE to W" must therefore be authorised for AICH and the utility must be run once for each server database (handdb, livedb, livesatdb, etc.)

Creating the "Set USERTYPE to W" menu entry:

Launch the Navigation Wizard from a suitable "spanner" icon.

Add a new item: Heading	Set USERTYPE to W	[Go >>]
System Link	☉ an SSI utility	[Next >>]
File	Set TROPOS Roles to Usertype W [setw.aspx]	[Next >>]
Launch Type	☉ Container	
TROPOS online session required	<input checked="" type="checkbox"/> (yes)	[Finish]

The "Set USERTYPE to W" utility can be re-run at any time. It detects (and ignores) server roles that have already been set to "W" and ignores roles from the Web Client that do not exist on the target TROPOS server database.

### 3.6.3 Authorise a User

#### 3.6.3.1 User Already Has this Role

The error message "User already has this Role" would occasionally be seen when the "Authorise a User" utility was run. This has now been corrected.

#### 3.6.3.2 No Changes Entered

The error message "No changes entered" would be seen when authorising an existing user whose matching TROPOS identity had a blank "Public Identity" field. This has now been corrected. If a new identity is being added, or if an existing identity has a blank public identity field, a public identity is generated.

When generating a public identity, the "Full Initials" field from the user's Web Client profile is used. If this is blank, the first character of the First Name and the first character of the Surname are concatenated to provide the initials. If the initials represent a unique public identity on the TROPOS database, they are used as the public identity. Otherwise, a numeric digit is appended to the initials to create a unique value.

### 3.6.4 Separate Window Quick Code

The TROPOS quick code belonging to a transaction being run in a Web Client separate window no longer interferes with the quick code showing in the system frame.

For example, if transaction IDSY (Display Item Data) is run in the main Web Client content frame, "IDSY" is shown in the quick code field in the system frame above it. If transaction IPDY (Display Inventory Parameters) is then selected from the menu to be run in a separate window, there are two concurrent, potentially active quick codes, "IDSY" and "IPDY". Previously, when the IPDY separate window was closed, it left "IPDY" in the system frame quick code field (because IPDY was the last active transaction). However, this caused confusion because it did not match the screen currently displayed in the main Web Client content frame (IDSY).

This has been corrected so that, in the above example, when the main Web Client content frame is showing the IDSY screen, the matching quick code "IDSY" is displayed in the system frame.

### **3.6.5 TROPOS Calendar Control**

#### **3.6.5.1 The TODAY Button**

When the [TODAY] button on the calendar control was pressed the date did not go to "today" but just to the current month. For example, if today was 31st May, and the calendar control was on 12th April, clicking the [TODAY] button would go to 12th May not 31st May. This error has been corrected.

#### **3.6.5.2 Calendar Window Already Open**

Where there is more than one calendar icon on a TROPOS screen, an error was produced if one of them was clicked to open the calendar window and then another calendar icon was clicked without first closing the currently open calendar window.

This has now been corrected so that clicking a calendar icon closes any currently open calendar window before opening its own calendar window.

#### **3.6.5.3 Calendar Icons**

For some Web Client "skins", the calendar icon was a different image from the standard image. The calendar icons have been rationalised so that they are now all the same.

### **3.6.6 Text Screen Fixed Font Printing**

When the fixed font option on the TROPOS text screen (TECH) is used, the screen will now be printed in fixed font.

### **3.6.7 Deferred Processing Reference Field**

The DEFR transaction (Deferred Processing) provides its own reference field of date and time. This was erroneously being overwritten by a parameter from the Web Client which caused the date and time to appear only briefly. The problem has been resolved.

### **3.6.8 E-mailing TROPOS Screens**

The error message "Operation Not Allowed" was seen when closing the TROPOS screen e-mailing window via the [Close] button rather than via the Internet Explorer [X] button. This has now been corrected and the window may be closed using either method.

### **3.6.9 Multiple Updating Grids on a Single Web Page**

There was an error in the software when there was more than one updating grid on a single web page; it was possible for the update routine relating to the wrong grid to be called. The software has been corrected.

### 3.6.10 Updating Grids on a SQL Server Database

Where the value in an updateable grid column was calculated, rather than coming unaltered from a database column, it was not possible to enter an amended value when connected to a SQL Server database. The software has been amended to allow this.

### 3.6.11 Code Clarification

The webpage `ssi_rds.aspx`, which reads data directly from the TROPOS database on behalf of the Web Client, used to imply that it was using a server cursor to access the database (although in fact it was always using a client cursor). This code has been corrected to indicate that it is using a client cursor.

## 3.7 Database Modifications

### 3.7.1 Issues and Training Database on SQL Server and Oracle

The Issues and Training database functionality did not work correctly on SQL Server or Oracle databases. This has been corrected.

### 3.7.2 TROPOS Screen Drill-down Database

Many TROPOS input fields have related transactions that can be linked to by right-clicking the field and selecting the transaction from the resulting drill-down menu. These drill-downs are defined in Access database *query.mdb* held in the root folder of the Web Client.

Originally, *query.mdb* was recorded in Access 97 format but this has proved to be incompatible with more recent Windows operating systems. Consequently, it has been converted to Access 2002 format for new Web Client installations.

Customers should convert existing *query.mdb* databases to Access 2002 format if they experience the same problem, that is, right-clicking an input field displays no drill-down menu and sometimes hangs with the hourglass cursor permanently showing or the error 'Empty SQL result stream'.

The procedure for converting *query.mdb* is documented in the "Upgrading the TROPOS Web Client" manual on the CD.

### 3.7.3 Database Migration

The standalone utility "Database Centralisation - Export/Import Data" is used to migrate the Web Client database from Access to SQL Server or Oracle. It can also be used to transfer data between two servers, typically when setting up a new server. During this process, the transfer of the *MyMenu* table can take a considerable amount of time and may cause an ASP timeout error.

There is now an option to ignore the *MyMenu* table during data transfer. The effect is to reduce the time taken for the transfer by delivering an empty *MyMenu* table to the target database. This table is automatically populated by the menu regeneration page when each user first logs into the new system.

## **3.8 Technical Changes**

### **3.8.1 TROPOS Web Client Installation Program**

The installation process has been modified to include the TROPOS Help Generator software, and to correct an error in the naming of the folder ASPXasText.

### **3.8.2 Drilldown on TROPOS Application Server 3.0.0**

On a TROPOS 3.0.0 database, the TROPOS Web Client reported error 510 “Drilldown not available” when attempting to drill down on a dataname for which there were no drill-down details defined. The software has been amended to silently ignore this error.